

Electrical safety edge system

Gelbau system

Principle

The Contact-Duo profile (signal transmitter) is fitted with two parallel-running, electrical conductors, which are isolated from each other by rubber insulators. A copper strip is also incorporated lengthways into each extruded moulding.

These electrically conductive zones carry the zero signal current, which is monitored by the signal evaluating system. Whenever the rubber profile is activated during access, a re-open command is generated and the door moves to final open position.

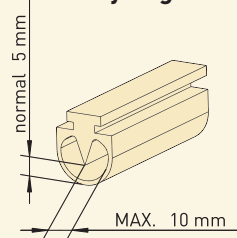
The signal will be recognised directly in door controls TS 970/TS 971/TS 981.



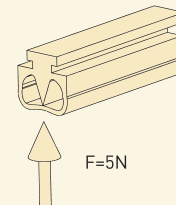
We supply assembled electrical safety edges ready to be installed on site.

Principle

Safety edge not activated



Safety edge activated



For roller shutters and sectional doors

supplied ready to be installed, for use with door controls TS 970/TS 971/TS 981

With guide (for roller shutters)

Rubber profile no. 001/002/009

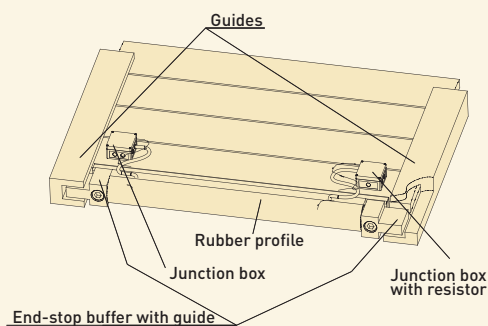
Stop buffer with guide

Without guide (for roller shutters or sectional doors)

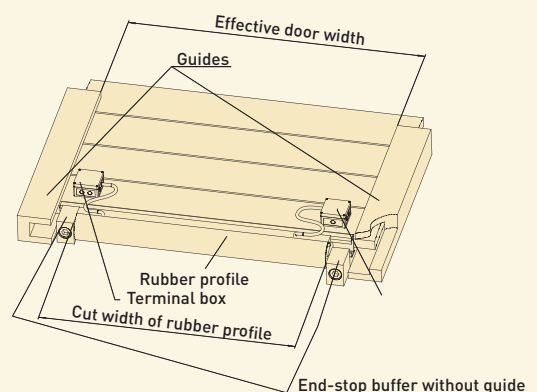
Rubber profile no. 001/002/009 Stop buffer without guide

Rubber profile no. 003/006 with Stop buffer without guide

Roller door end-piece with guide profile



Roller and sectional door without guides

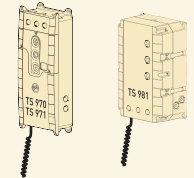
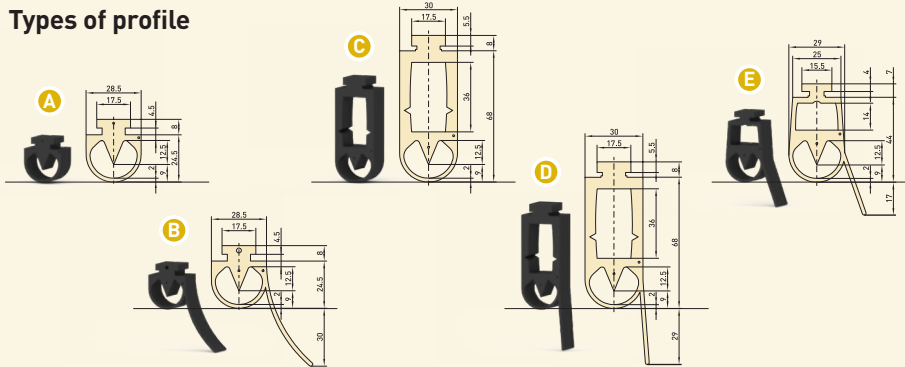


Electrical safety edge system

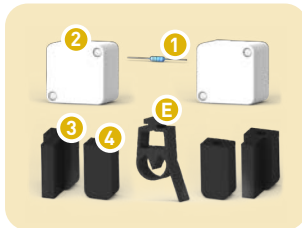
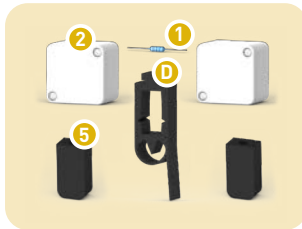
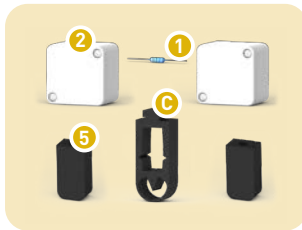
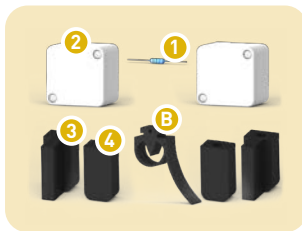
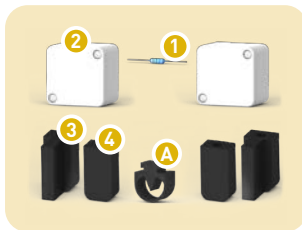
Gelbau system

Electrical safety edge for roller shutters and sectional doors¹⁾

Types of profile



- 1) Supplied ready to be installed, for use with GfA door controls TS 970, TS 971 or TS 981
- Additionally required:
Spiral cable, see 3) under accessories on page 9.008



Designation	Description	Part no.
Safety edge Rubber profile no. 001 A	With resistor 1 and 2 junction boxes 2 With stop buffer with guide 3 Stop buffer without guide 4 Running meters up to 8 m ²⁾	30001420 30001428 18051153
Safety edge Rubber profile no. 002 B	With resistor 1 and 2 junction boxes 2 With stop buffer with guide 3 Stop buffer without guide 4 Running meters up to 8 m ²⁾	30001426 30001429 18051346
Safety edge Rubber profile no. 003 C	With resistor 1 and 2 junction boxes 2 With stop buffer with guide 5 Running meters up to 8 m ²⁾	30001424 18051155
Safety edge GuRubber profile no. 006 D	With resistor 1 and 2 junction boxes 2 With stop buffer with guide 5 Running meters up to 8 m ²⁾	30001427 18051348
Safety edge Rubber profile no. 009 E	With resistor 1 and 2 junction boxes 2 With stop buffer with guide 3 Stop buffer without guide 4 Running meters up to 8 m ²⁾	30001422 30001430 18051157

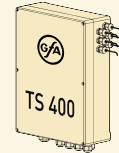
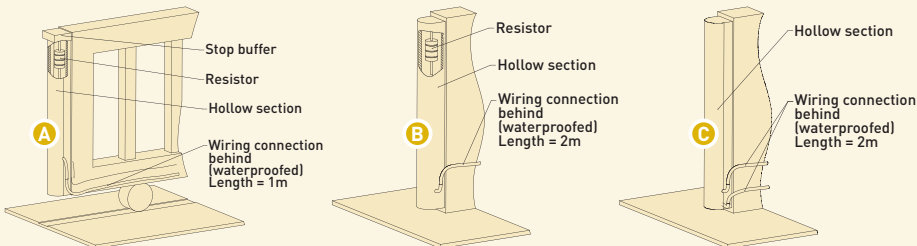
■ 2) Part no applies to profile lengths of up to 8 m, for lengths of over 8 m, a supplement per metre is applied over the entire length

Electrical safety edge system

Gelbau system

Electrical safety edge for sliding doors¹⁾

Use cases

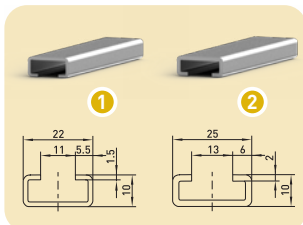


■ 1) Ready assembled, to be used with GfA door control TS 400



Designation	Description	Part no.
Rubber profile for main closing edge	A Rubber profile no. 003 1 with resistor 2 ; with stop buffer 3 , 1 m connection cable 4 Running meters	30001421 18051155
Rubber profile for secondary closing edge	B Rubber profile no. 003 1 with resistor 2 ; without stop buffer, 2 m connection cable 5 Running meters	30003352 18051155
Rubber profile for existing onsite evaluation system 8k2	C Rubber profile no. 003 1 without resistor; without stop buffer, 2x 2 m connection cable 5 Running meters	30001185 18051155

Accessories



Designation	Description	Part no.
C-profile for rubber 001, 002, 003, 006, 009	1 Galvanized steel 1 m 2 m 3 m	40014486 40014485 40014216
C-profile for rubber 001, 002, 003, 006, 009	2 Aluminium 1 m 2 m	40014487 40014219
Spiral cable 4-core for the Gelbau system	3 Spiral length 0,9 m stretches to max. 4 m straight cable length 0,4 m/0,35 m 2,0 m/0,35 m	40015736 40015735
WSD (with battery) for other electrical safety edges 8k2; IP65	4 Wireless safety device (2,4 GHz) (can only be used with door control TS 971) - Evaluation for common safety-edge systems and for pass-door and slack-rope switches - Pluggable connection technology - Wide operating range - Battery: average service life of 1.5 years, approx.	30005154
Spiral cable for other electrical safety edges 8k2; screwable; IP65	5 For transmitter / receiver also for pass-door and slack-rope switch, spiral length 0,9 m; stretches to max. 4 m; straight cable length 0,4 m/0,35 m straight cable length 2,0 m/0,35 m straight cable length 2,0 m/0,35 m + kink protection 6	20002340.00001 20002340.00007 20002340.00019