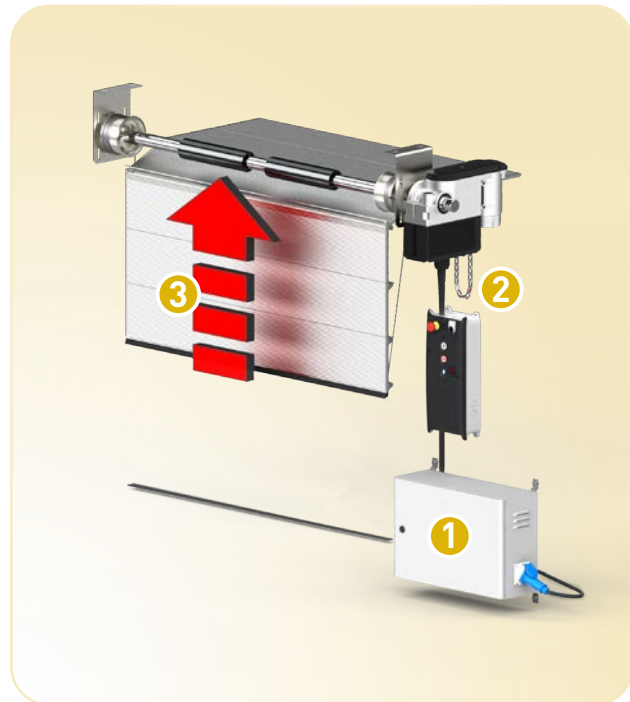


A UPS **1** guarantees the uninterruptible power supply of a door drive system consisting of drive unit and door control **2**. If a power failure is detected, the UPS automatically switches to emergency operation. In emergency operation, the drive system can be used for at least one opening process of the door **3**. The possible duration of emergency operation depends on the power consumption of the door drive system and the battery capacity of the UPS. The GfA product range offers two different UPS devices for door drive systems with supply via single-phase alternating current.<sup>1)</sup>

### Specific features:

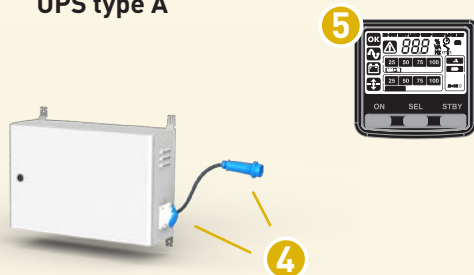
- High protection to ensure power supply to the door
- Equipped with CEE plug connections on input and output side **4**
- Automatic shutdown in case of overtemperature and overload
- Illuminated LCD display **5**



UPS		Type A	Type B
Input voltage range	V	162 - 290	190 - 264
Input frequency	Hz	50 / 60	50 / 60
Output voltage	V	1-230	1-230
Output power (active power / nominal power)	W / VA	1600 / 2000	3000 / 3750
Output waveform		Sinus	
Max. capacity	Ah	36	110
Bypass switching time (max.)	ms	8 - 10	12
Batteries		4 x 12 V	2 x 12 V
Temperature range	°C	0 .. +40	+5 .. +40
Weight (with batteries)	kg	35	103
Dimensions (W x H x D)	mm	677 x 400 x 200	815 x 760 x 300
Part no. UPS		20003219.00004 <sup>2)</sup>	20003219.00012 <sup>3)</sup>
Part no. battery set (with 2 batteries 55 Ah)		—	40017178 <sup>4)</sup> <b>6</b>
Part no. installation drawing		50002039	50002040

■ 1) Not suitable for use in escape and rescue routes · 2) Delivery incl. batteries · 3) Delivery without batteries · 4) Battery set for UPS type B

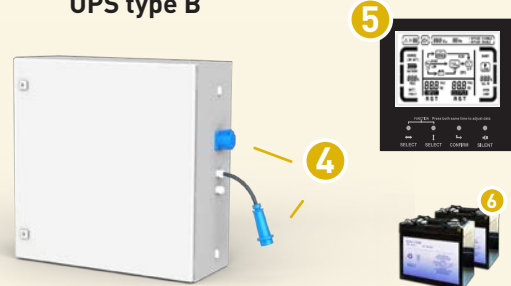
### UPS type A



Suitable for the following ELEKTROMATEN®:

SIK 17.10 WS / KE 9.24 WS / SE 5.24 WS / TSE 5.24 WS / SE 8.60 FI / SE 9.15 WS / SE 9.20 WS / SE 9.24 WS

### UPS type B



Suitable for the following ELEKTROMATEN®:

SIK 25.10 WS / SI 25.15 WS / SI 45.7 WS / SE 6.80 FI / all FI drive units with 0.85 kW or 1.5 kW motor power, e.g. SI 17.60 FI, SI 25.80 FI, KE 40.40 FI