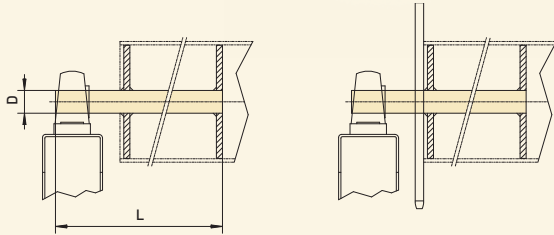


Mechanical accessories

10.1 Shafts A

Without key

Material:
S355J2C+C (No. 1.0579)



Bearing side

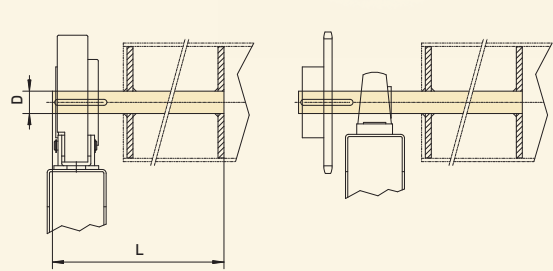
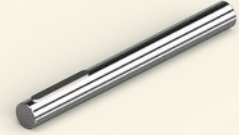
Bearing side with plate wheel

Ø D	L [mm]	Part no.
25	350	40012327
30	600	40012328
40	600	40012329
50	600	40012330
55	600	40012663
60	600	40012331
80	800	40012664
100	980	40017002

10.2 Shafts B

With key

Material:
S355J2C+C (No. 1.0579)



Safety brake

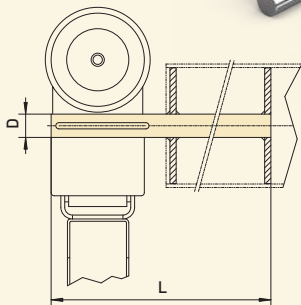
Sprocket and bearing

Ø D	L [mm]	Key	Part no.
30	600	8 x 7 x 70	30003002
40	600	12 x 8 x 70	30003003
50	600	14 x 9 x 70	30003004
60	600	18 x 11 x 100	30003005
80	800	22 x 14 x 100	30003184

10.3 Shafts C

With key

Material:
S355J2C+C (No. 1.0579)



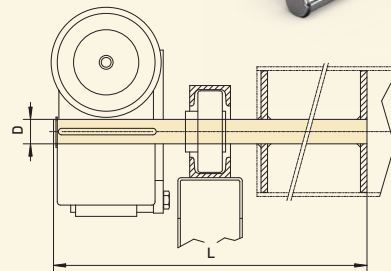
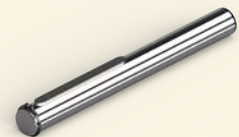
ELEKTROMATEN SI + SIK with floating foot

Ø D	L [mm]	Key	Part no.
25	350	8 x 7 x 100	30003007
30	600	8 x 7 x 120	30003008
40	600	12 x 8 x 120	30003009
55	600	16 x 10 x 140	30003185
60	600	18 x 11 x 140	30005035
80	800	22 x 14 x 200	30005905
100	980	28 x 16 x 210	30005173

10.4 Shafts D

With key and circlip

Material:
S355J2C+C (No. 1.0579)



ELEKTROMATEN SI + SIK with moving-torque mount

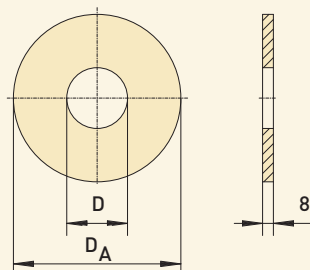
Ø D	L [mm]	Key	Part no.
30	600	8 x 7 x 120	30003013
40	600	12 x 8 x 120	30003014
55	600	16 x 10 x 140	30003186

Mechanical accessories

11. Discs for tubes



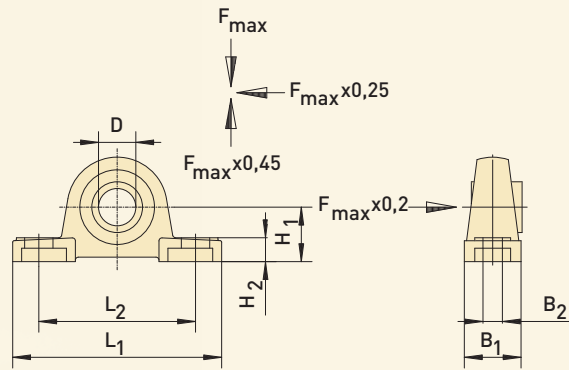
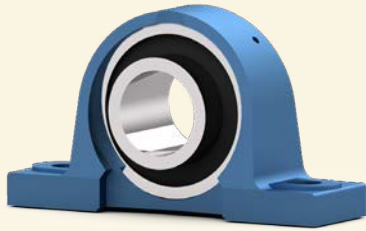
Material:
S235JR (No. 1.0038)



D	D _A	For tube	Part no.
30	99	108,0 x 3,6	40000376
30	124	133,0 x 4,0	40000379
40	124	133,0 x 4,0	40000381
55	124	133,0 x 4,0	40012974
30	149	159,0 x 4,5	40000383
40	149	159,0 x 4,5	40000385
50	149	159,0 x 4,5	40000387
55	149	159,0 x 4,5	40011017
30	166	177,8 x 5,0	40000681
40	166	177,8 x 5,0	40000389
50	166	177,8 x 5,0	40000391
55	166	177,8 x 5,0	40000958
30	182	193,7 x 5,4	40001214
40	182	193,7 x 5,4	40000394
50	182	193,7 x 5,4	40000396
55	182	193,7 x 5,4	40010131
60	182	193,7 x 5,4	40000397
40	206	219,1 x 5,9	40000682
50	206	219,1 x 5,9	40000400
55	206	219,1 x 5,9	40001881
60	206	219,1 x 5,9	40000403
40	231	244,5 x 6,3	40000405
50	231	244,5 x 6,3	40000407
55	231	244,5 x 6,3	40011551
60	231	244,5 x 6,3	40001769
70	231	244,5 x 6,3	40000408
55	259	273,0 x 6,3	40010168
60	259	273,0 x 6,3	40000411
70	259	273,0 x 6,3	40000412
80	259	273,0 x 6,3	40000413
55	283	298,5 x 7,1	40012567
60	283	298,5 x 7,1	40000416
55	308	323,9 x 7,1	40012568
60	308	323,9 x 7,1	40000421
70	308	323,9 x 7,1	40000422
80	308	323,9 x 7,1	40000423

Mechanical accessories

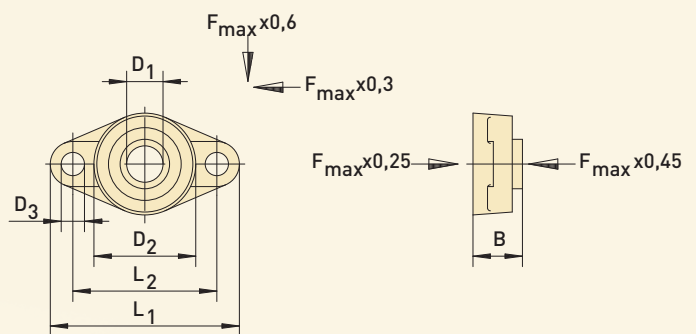
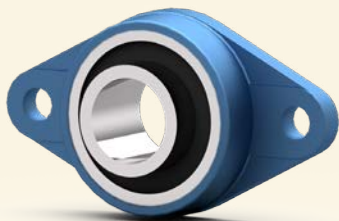
12. Pedestal bearings



■ Observe loading-direction

D	L1	L2	H1	H2	B1	B2	F_{max} (KN)	Part no.
25	140	105	36,5	16	38	13	7,3	40000435
30	165	121	42,9	18	48	17	10,5	40000436
40	184	137	49,2	19	54	17	16,5	40000438
50	206	159	57,2	22	60	20	21,0	40000440
55	219	171	63,5	22	60	20	26,6	40003006
60	241	184	69,8	25	70	20	33,0	40000441
70	266	210	79,4	27	72	25	40,0	40000442
80	292	232	88,9	30	78	25	47,5	40000443
100	490	380	140	55	120	36	135,0	40001531

13. Flange bearings

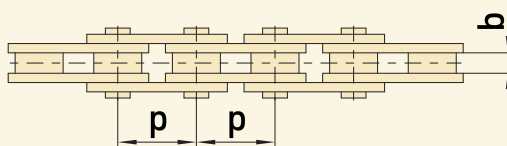


■ Observe loading-direction

D1	D2	D3	L1	L2	B	F_{max} (KN)	Part no.
25	68	16	130	99	34	7,3	40000425
30	80	16	148	117	38,1	10,5	40000426
40	100	16	175	144	49,2	16,5	40000428
50	115	19	197	157	54,6	21,0	40000430
55	130	19	224	184	58,4	26,6	40012570
60	140	23	250	202	68,7	33,0	40000431
80	180	25	290	233	83,3	47,5	40000433

Mechanical accessories

14. Roller chains / Chain link

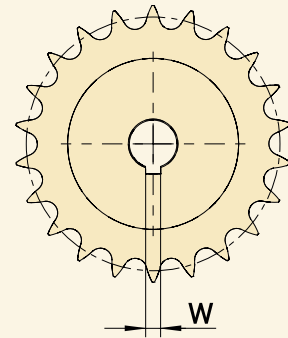
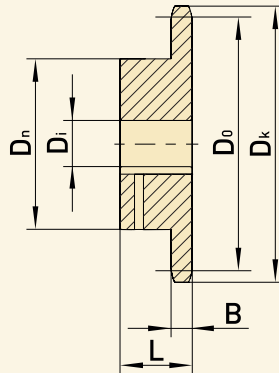


Designation	p x b [inch]	p x b [mm]	Ultimate load of chain DIN 8187 [N]	Number of teeth's	Max. M_{ab} [Nm]	Description	Part no.
08 B-1	1/2" x 5/16"	12,7 x 7,75	18.000	15 19	90 115	1,5 m 5,0 m Link	40005050 40017783 40000613
12 B-1	3/4" x 7/16"	19,05 x 11,68	29.000	15 19	220 280	2,0 m 5,0 m Link	40003030 40013909 40000615
16 B-1	1" x 17,02 mm	25,4 x 17,02	60.000	15 19	610 770	2,5 m 5,0 m Link	40005049 40013910 40000617
20 B-1	1 1/4" x 3/4"	31,75 x 19,56	95.000	15 19	1200 1520	3,0 m 5,0 m Link	40014878 40017784 40001111

■ For chain and sprockets, the maximum permitted torque M_{ab} on ELEKTROMATEN is as shown in the table (safety factor 6x the breaking strain)

Mechanical accessories

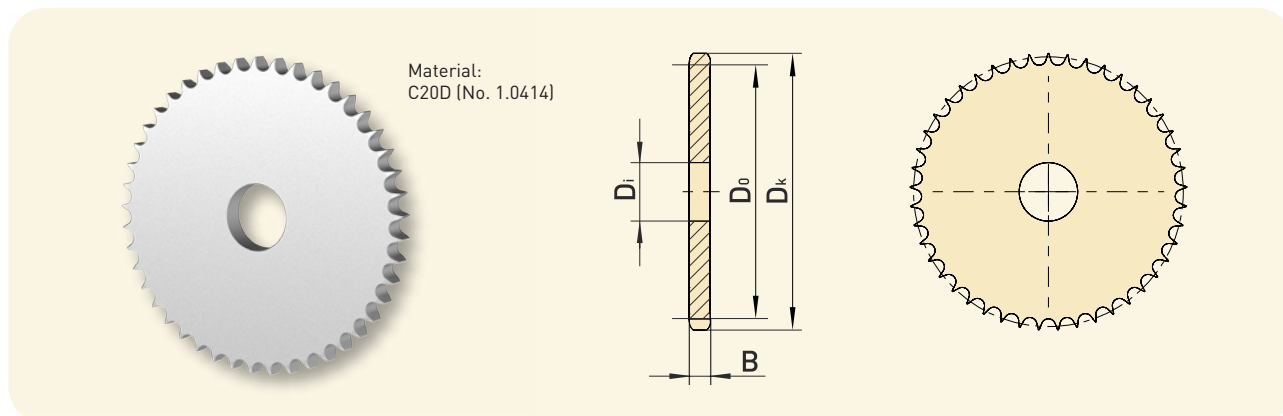
15. Sprockets



Number of teeth Z	Bore Ø D _i [mm]	Pitch circle Ø D ₀ [mm]	Ø D _k [mm]	Hub Ø D _n [mm]	Tooth width B [mm]	Total width L [mm]	Width of key W [mm]	Part no.
15.1 Teilung 08 B-1 (1/2" x 5/16")								
15	25	61,1	65,5	45	7,2	28	8	30000237
19	25	77,2	81,7	60	7,2	28	8	30000238
19	25,4	77,2	81,7	60	7,2	28	6,35	30001086
19	31,75	77,2	81,7	60	7,2	28	6,35	30002243
25	25,4	101,3	105,8	60	7,2	28	6,35	30000761
25	31,75	101,3	105,8	60	7,2	28	6,35	30001990
30	30	121,5	126,1	80	7,2	30	8	30000239
30	40	121,5	126,1	80	7,2	30	12	30000406
45	30	182,1	188,0	70	7,2	42	8	30000242
45	40	182,1	188,0	70	7,2	42	12	30000244
57	30	230,5	236,4	70	7,2	42	8	30000245
57	40	230,5	236,4	70	7,2	42	12	30000247
15.2 Pitch 12B-1 (3/4" x 7/16")								
15	25	91,6	99,8	70	11,1	35	8	30000211
15	30	91,6	99,8	70	11,1	35	8	30000538
15	40	91,6	99,8	70	11,1	35	12	30000219
19	25	115,8	124,2	80	11,1	35	8	30000212
19	30	115,8	124,2	80	11,1	35	8	30000310
19	40	115,8	124,2	80	11,1	35	12	30000220
22	25	133,9	141,8	90	11,1	40	8	30000213
30	40	182,3	190,5	95	11,1	40	12	30000223
30	50	182,3	190,5	95	11,1	40	14	30000224
45	50	273,1	282,5	100	11,1	56	14	30002824
45	60	273,1	282,5	100	11,1	56	18	30002832
57	50	345,8	355,4	100	11,1	56	14	30000234
15.3 Pitch 16B-1 (1" x 17,02 mm)								
15	40	122,2	133,0	92	16,2	40	12	30000171
15	55	122,2	133,0	92	16,2	40	16	30000173
19	40	154,3	165,2	100	16,2	45	12	30000321
19	50	154,3	165,2	100	16,2	45	14	30000322
19	55	154,3	165,2	100	16,2	45	16	30000688
30	50	243,0	254,0	120	16,2	50	14	30000181
30	60	243,0	254,0	120	16,2	50	18	30002396
45	50	364,1	377,9	125	16,2	70	14	30000184
45	60	364,1	377,9	125	16,2	70	18	30000185
57	50	461,1	474,9	125	16,2	70	14	30000192
57	60	461,1	474,9	125	16,2	70	18	30000193
57	80	461,1	474,9	125	16,2	70	22	30001032
15.4 Pitch 20B-1 (1 1/4" x 3/4")								
15	55	152,7	167,9	118	18,5	45	14	30002900
15	55	152,7	167,9	118	18,5	45	16	30000920
19	55	192,9	208,1	120	18,5	50	16	30003163
45	60	455,2	470,3	150	18,5	70	18	30003190
45	80	455,2	470,3	150	18,5	70	22	30003191
57	60	576,4	592,3	150	18,5	80	18	30003192
57	80	576,4	592,3	150	18,5	80	22	30003193

Mechanical accessories

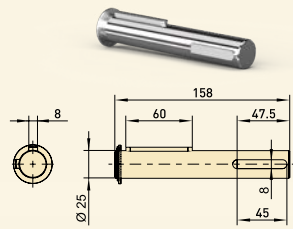
16. Plate wheels



Number of teeth Z	Bore \emptyset D_i [mm]	Pitch circle \emptyset D_0 [mm]	\emptyset D_k [mm]	Tooth width B [mm]	Part no.
16.1 Pitch 08 B-1 (1/2" x 5/16")					
45	30	182,1	188,0	7,2	40000464
57	30	230,5	236,4	7,2	40000468
57	40	230,5	236,4	7,2	40000470
16.2 Pitch 12 B-1 (3/4" x 7/16")					
45	50	273,1	282,5	11,1	40012557
45	60	273,1	282,5	11,1	40012598
57	50	345,8	355,4	11,1	40000458
16.3 Pitch 16 B-1 (1" x 17,02 mm)					
30	50	243,0	254,0	16,2	40000474
45	50	364,1	377,1	16,2	40000477
45	60	364,1	377,1	16,2	40000478
57	50	461,1	474,0	16,2	40000485
57	60	461,1	474,0	16,2	40000486
57	70	461,1	474,0	16,2	40000487
57	80	461,1	474,0	16,2	40006524
16.4 Pitch 20 B-1 (1 1/4" x 3/4")					
45	60	455,2	470,3	18,5	40012672
45	70	455,2	470,3	18,5	40012709
45	80	455,2	470,3	18,5	40012673
57	60	576,4	591,5	18,5	40006404
57	70	576,4	591,5	18,5	40012710
57	80	576,4	591,5	18,5	40001532

Mechanical accessories

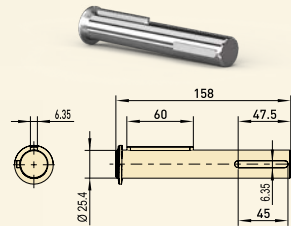
17.1 Stub shafts



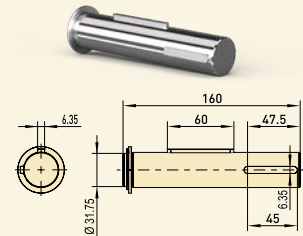
25 Part no.
30002596

for series

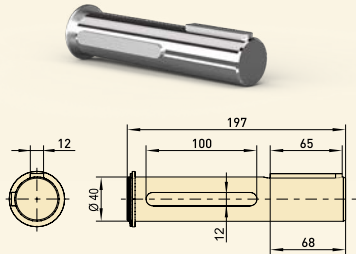
SG50



25.4 Part no.
30002628



31.75 Part no.
30002699



40 Part no.
30002637

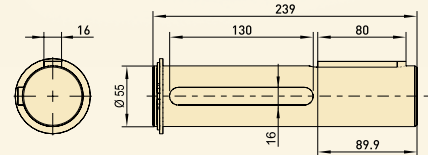
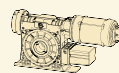
for series

SG85



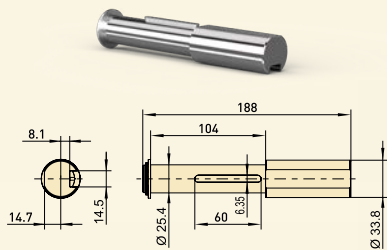
for series

SG115



55 Part no.
30003078

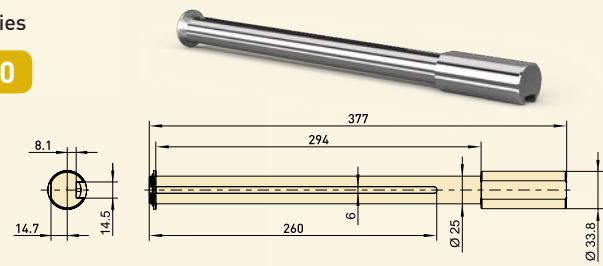
17.2 Adapter shafts



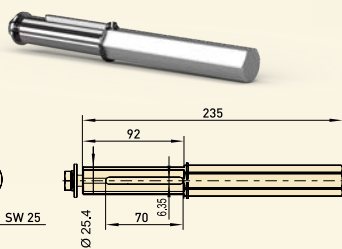
25.4/33.8 Part no.
30004619

for series

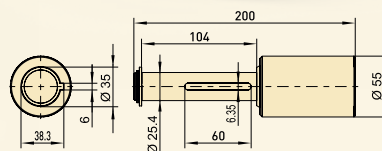
SG50



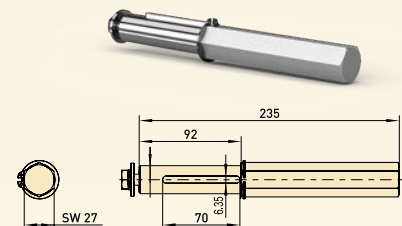
25.4/33.8 Part no.
30004710



25.4/SW25 Part no.
30004823



25.4/35 Part no.
30004630



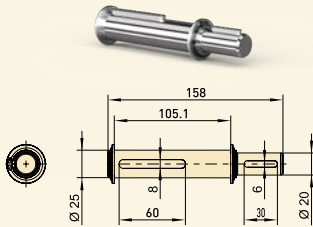
25.4/SW27 Part no.
30002125

Mechanical accessories

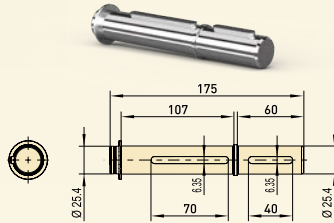
17.3 Adapter stub shafts

for series

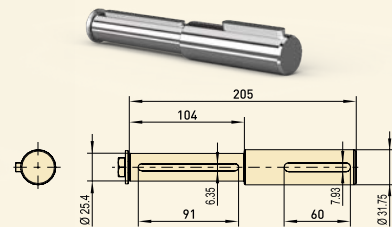
SG50



25/20 Part no.
30004845



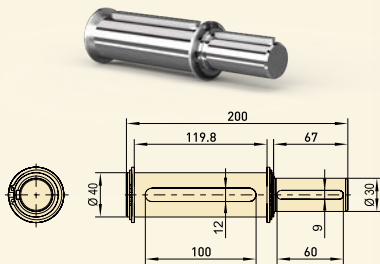
25.4/25.4 Part no.
30002691



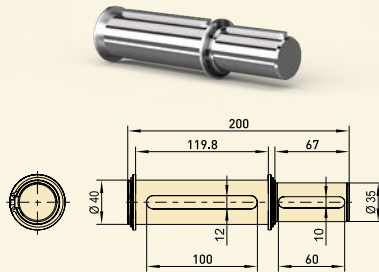
25.4/31.75 Part no.
30005146

for series

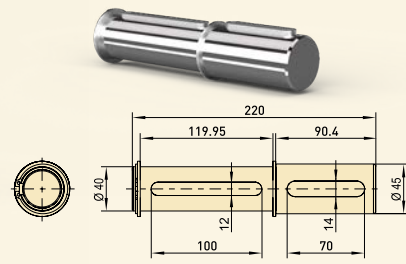
SG85



40/30 Part no.
30004436



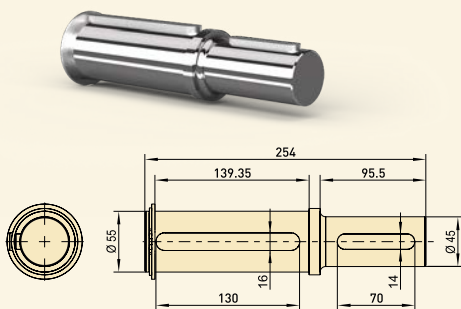
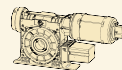
40/35 Part no.
30003288



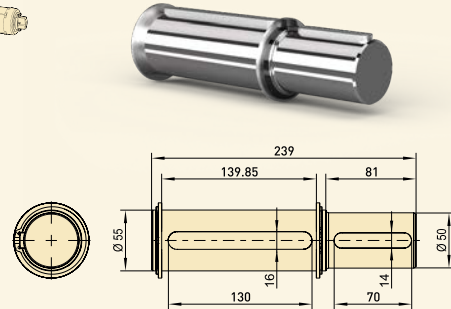
40/45 Part no.
30005125

for series

SG115



55/45 Part no.
30003305



55/50 Part no.
30004879